

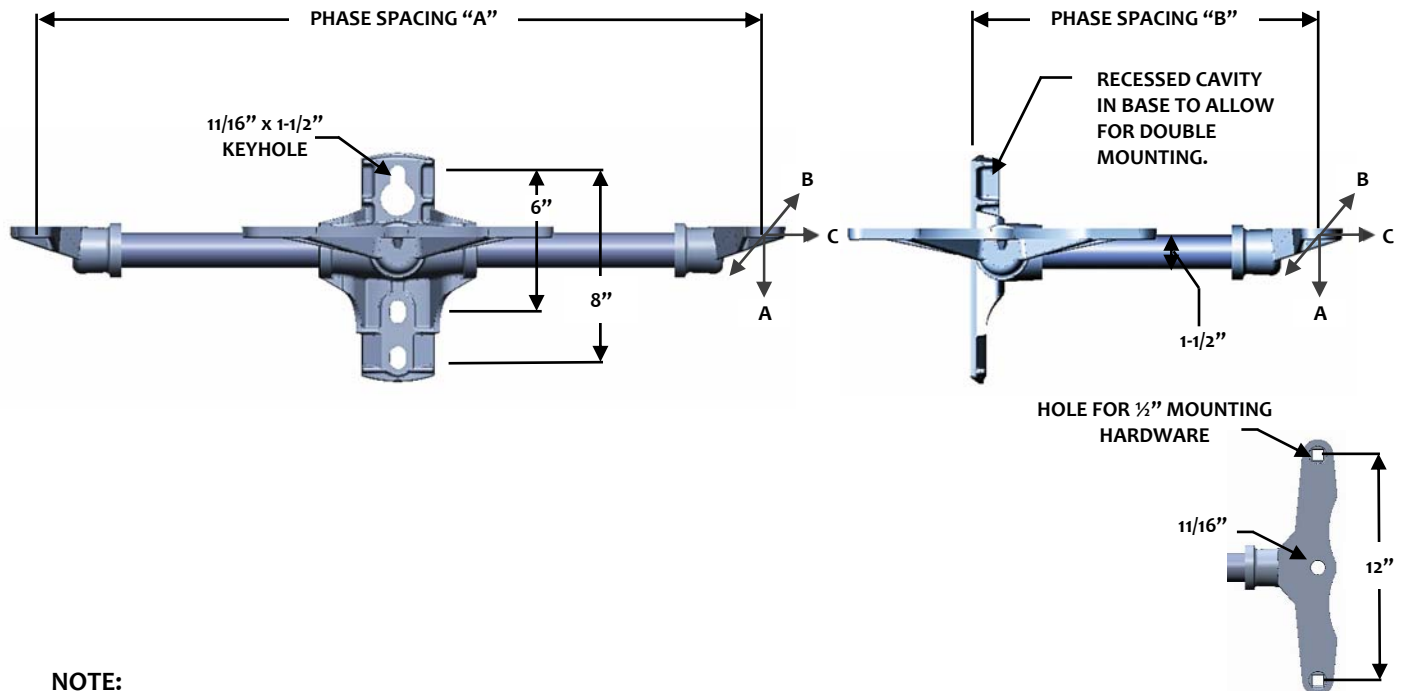
**TRIPLE PHASE 0° CUTOUT & ARRESTOR BRACKETS**

**SPECIFICATIONS**

**BASE:** ALUMINUM, 356-T6  
**ROD:** SOLID, ELECTRICAL GLASS ROVING WITH ULTRA-VIOLET INHIBITORS. VEIL COATED.  
**FITTING:** ALUMINUM, 356-T6  
**HARDWARE:** STEEL, HOT DIP GALVANIZED

CATALOG NUMBER	PHASE SPACING "A" INCHES	PHASE SPACING "B" INCHES	MINIMUM ULTIMATE LOAD (LBS)		
			VERTICAL A	LONG B	TRANS. C
FLH30-1-3613-C2	36	13	1200	900	10,000
FLH30-1-3618-C2	36	18	1200	900	10,000
FLH30-1-4813-C2	48	13	900	700	10,000
FLH30-1-4818-C2	48	18	900	700	10,000

RECOMMENDED WORKING LOAD 50% OF RATING LISTED



**NOTE:**  
 FOR OTHER LENGTHS PLEASE CONTACT US.  
 FOR BRACKET WITH (2) 1/2" CAPTIVE CARRIAGE BOLTS, SHAKEPROOF WASHERS, LOCK WASHERS AND HEX NUTS, ADD SUFFIX "H" TO CATALOG. (EXAMPLE: FLH30-1-3613-C2-H)  
 TO SPECIFY SILICONE COATED ROD, ADD SUFFIX "SC" (I.E. = FLH30-1-3613-C2-SC)